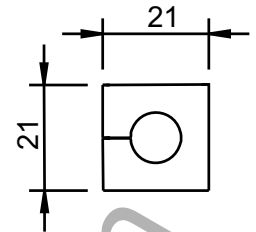


# KT

## Inserts, small



Description	Type	Order No grey	Order No black	Clamping range	PU
-------------	------	------------------	-------------------	----------------	----

1

### Product description

KT cable inserts small are used with the following cable entry frames:

- KEL - Page 6 - 13
- KEL-FG - Page 14
- KVT - Page 16 - 17
- KVT-W90 - Page 18

The model range KT small is designed for cable diameters from 2 to 17mm.

### Assembly

When installing the insert, the smooth side of the insert faces the middle of the cable entry frame.

### Specification KT grey

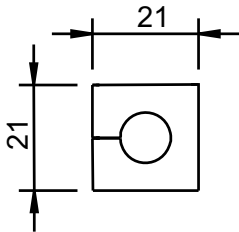
Material	Elastomer
Flame class	UL-94 Vo, self-extinguishing
Temperature	- 30°C to + 90°C (static)
Properties	halogen-free, silicone-free

### Specification KT black

Material	Elastomer
Flame class	UL-94 HB
Temperature	- 30°C to + 90°C (static)
Properties	higher chemical resistance, UV-stabilized

BTK	BTK	41251	41351	Blind insert	10
KT	KT 2	39934	41302	2 - 3 mm	10
	KT 3	41203	41303	3 - 4 mm	10
	KT 4	41204	41304	4 - 5 mm	10
	KT 5	41205	41305	5 - 6 mm	10
	KT 6	41206	41306	6 - 7 mm	10
	KT 7	41207	41307	7 - 8 mm	10
	KT 8	41208	41308	8 - 9 mm	10
	KT 9	41209	41309	9 - 10 mm	10
	KT 10	41210	41310	10 - 11 mm	10
	KT 11	41211	41311	11 - 12 mm	10
	KT 12	41212	41312	12 - 13 mm	10
	KT 13	41213	41313	13 - 14 mm	10
	KT 14	41214	41314	14 - 15 mm	10
	KT 15	41215	41315	15 - 16 mm	10
	KTs 16	39901	39912	16 mm	10
	KTs 17	39900	39913	17 mm	10

# KT Inserts, small



## Product description

KT cable inserts small are used with the following cable entry frames:

- KEL - Page 6 - 13
- KEL-FG - Page 14
- KVT - Page 16 - 17
- KVT-Wgo - Page 18

The model range KT small is designed for cable diameters from 2 to 17mm.

## Assembly

When installing the insert, the smooth side of the insert faces the middle of the cable entry frame.

## Specification KT grey

Material	Elastomer
Flame class	UL-94 V0, self-extinguishing
Temperature	- 30°C to + 90°C (static)
Properties	halogen-free, silicone-free

## Specification KT black

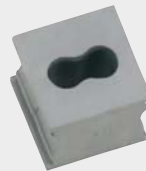
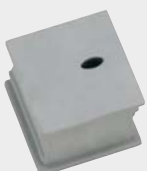
Material	Elastomer
Flame class	UL-94 HB
Temperature	- 30°C to + 90°C (static)
Properties	higher chemical resistance, UV-stabilized

Type	Order No grey	Order No black	Clamping range	PU	Description
KT 2   2	39935	39936	2x Ø 2 mm	10	KT 2   x
KT 2   3	39939	39940	2x Ø 3 mm	10	
KT 2   4	39906	39907	2x Ø 4 mm	10	
KT 2   5	41200	39904	2x Ø 5 mm	10	
KT 2   6	41201	39905	2x Ø 6 mm	10	
KT 2   7	41202	39916	2x Ø 7 mm	10	KT 4   x
KT 2   8	39917	39918	2x Ø 8 mm	10	
KT 4   2	39937	39938	4x Ø 2 mm	10	
KT 4   3	39914	39915	4x Ø 3 mm	10	
KT 4   4	39909	39911	4x Ø 4 mm	10	
KT 4   5	39908	39910	4x Ø 5 mm	10	KT ASI2   rl
KT 4   6	39932	39933	4x Ø 6 mm	10	
KT-ASI	39902	39903	1 ASI-cable	10	
KT-ASI2   rl	39922	39924	2 ASI-cables	10	
KT-ASI2   ll	39921	39923	2 ASI-cables	10	KT ASI2   ll
KTRS 12	39990	-		10	
KTRS 13	39992	-		10	
KTRS 16	39996	-		10	KTRS
KT tele	39929	-	Telephone cable	10	
KT oval	39930	-		10	
KT S1	39931	-		10	

KT tele

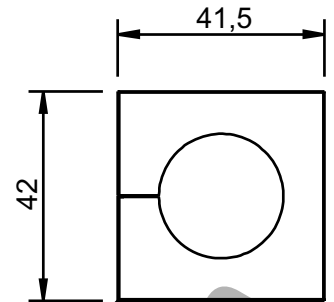
KT oval

KT S1



# KT

## Inserts, large



Description	Type	Order No. grey	Order No. black	Clamping range	PU
ATG	ATG	41253	41353	Adapter insert	10
BTG	BTG	41252	41352	Blind insert or 5 - 20 mm	10
KT 28	KT 16	41216	41316	16 - 17 mm	10
	KT 17	41217	41317	17 - 18 mm	10
	KT 18	41218	41318	18 - 19 mm	10
	KT 19	41219	41319	19 - 20 mm	10
	KT 20	41220	41320	20 - 21 mm	10
	KT 21	41221	41321	21 - 22 mm	10
	KT 22	41222	41322	22 - 23 mm	10
	KT 23	41223	41323	23 - 24 mm	10
	KT 24	41224	41324	24 - 25 mm	10
	KT 25	41225	41325	25 - 26 mm	10
	KT 26	41226	41326	26 - 27 mm	10
	KT 27	41227	41327	27 - 28 mm	10
	KT 28	41228	41328	28 - 29 mm	10
	KT 29	41229	41329	29 - 30 mm	10
	KT 30	41230	41330	30 - 32 mm	10
	KT 32	41232	41332	32 - 33 mm	10
	KT 34	41234	41334	33 - 34 mm	10

### Product description

The KT inserts large accept a wide range of cable diameters from 16 to 34 mm. They are used with the following cable entry frames:

- KEL - Page 6 - 13
- KEL-FG - Page 14
- KVT / KVT-W90 - Page 16 - 18
- KEL 183 - Page 30

ATG adapter inserts provide the possibility to hold a small KT insert to reduce the clamping range down to 2 mm.

### Specification KT grey

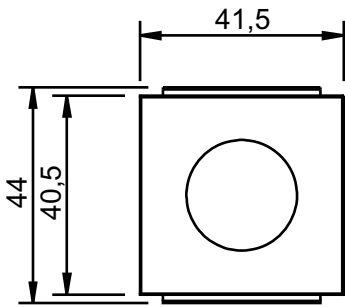
Material: Elastomer  
 Flame class: UL-94 Vo, self-extinguishing  
 Temperature: - 30°C to + 90°C (static)  
 Properties: halogen-free, silicone-free

### Specification KT black

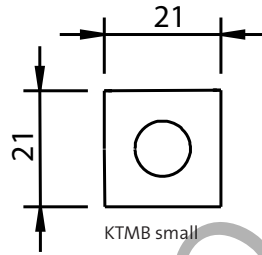
Material: Elastomer  
 Flame class: UL-94 HB  
 Temperature: - 30°C to + 90°C (static)  
 Properties: higher chemical resistance, UV-stabilized

# KTMB

## Inserts, multi-range



KTMB large



KTMB small



### Product description KTMB

The KTMB inserts accept a wide range of cable diameters. A great benefit when exact cable diameter is not known in advance.

The KTMB multi-range inserts are not suitable for pre-terminated cables.

### Specification KTMB grey

Material	Elastomer
Flame class	UL-94 Vo, self-extinguishing
Temperature	- 30°C to+ 90°C (static)
Properties	halogen-free, silicone-free

### Product description

The correct size of the KT inserts can easily be determined by using the cable template.

- Determining the diameter of the cable using the cable template
- Selecting the KT inserts according the data on the cable template

Order-No. 39800



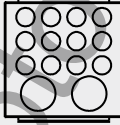
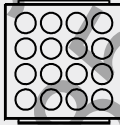
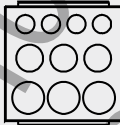
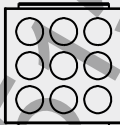
Type	Order No. grey	Size KT	Clamping range	PU	Description
------	-------------------	------------	----------------	----	-------------

KTMB-A	41432	KT small	2.5 - 6.5 mm	10	KTMB-D
KTMB-B	41434	KT small	4.0 - 7.5 mm	10	
KTMB-C	41436	KT small	6.5 - 10 mm	10	
KTMB-D	41438	KT small	9.5 - 13 mm	10	
KTMB-E	41440	KT small	13 - 16 mm	10	
					Cross section KTMB
KTMB-G	41460	KT large	13 - 18 mm	10	
KTMB-H	41465	KT large	18 - 23 mm	10	
KTMB-I	41470	KT large	23 - 28 mm	10	
KTMB-J	41475	KT large	28 - 33 mm	10	
KTMB-K	41480	KT large	2x 13 - 18 mm	10	

# DT

## Cable entry inserts



Description	Type	Order No.	Number of cables	PU
	DT 1	41500	12x max. 6.5 mm 2x max. 12.2 mm	10
	DT 2	41510	16x max. 7.1 mm	10
	DT 3	41520	4x max. 6.5 mm 3x max. 9.5 mm 3x max. 11.3 mm	10
	DT 4	41530	9x max. 9.5 mm	10

1

### Product description

The DT cable inserts are designed for standard cables (without connectors). A large number of cables can be routed utilizing minimal space.

DT inserts are designed to fit in KT large insert spaces:

- KEL 24 | KEL 16 | KEL 10 | KEL-B - Page 6 - 9
- KEL 24 Extensions - Page 11 - 13
- KEL-FG - Page 14
- KEL 183 - Page 30

### Advantages

- Combination of routing pre-terminated and standard cables with one cable entry frame
- Enables a sub-assembly of cable harnesses
- High packing density

### Specification

Material	Elastomer
Flame class	UL-94 Vo, self-extinguishing
Protection class	IP 54
Temperature	- 30°C to + 90°C (static)
Properties	halogen-free, silicone-free

## Service box for cable inserts

## KT | Service box for cable inserts



## Product description

**Convenient - everything readily available!**

The service box is perfect for installations and service calls.

The KT service box ensures your KT inserts are readily available.

Order No. 88001

## Content

**Cable inserts, small:**

- 116 KT for cables 2 - 17 mm
- 5 BTK blind inserts
- 10 KTMB multi-range inserts
- 8 KT-ASI for ASI-Bus cables

**Cable inserts, large:**

- 25 KT for cables 16 - 34 mm
- 4 BTG blind inserts / ATG adapter inserts
- 5 KTMB multi-range inserts

**Accessories:**

- 2 KEL-frames
- 1 KVT split cable gland
- 1 KZL strain relief plate
  
- 1 Cable template



The correct size of the KT inserts can easily be determined by using the cable template.

- Determining the diameter of the cable using the cable template
- Selecting the KT inserts according the data on the cable template

Cable templates can also be ordered separately (Order-No. 39800).